

Our Ref: ESL.MTL/Intro Letter/14.02.08/001

14 February 2008

For Your Kind Attention:

Dear Sir/Ma'am:

**INTRODUCTION OF EMI/ASP SYSTEMS LIMITED**  
**COMPLETE BROCHURE AND SCOPE OF SERVICE PROPOSAL**

We hereby write formally to introduce to you our organization Messrs EMI Systems Limited; We are a world class Israeli security company with core competence in the design, installation and maintenance of varied "full options " turnkey security solutions.

We have branches in Abuja, Lagos and Port-Harcourt. We have a long working profile in Nigeria and our clientele base range from financial institutions like the Central Bank of Nigeria (CBN), governmental agencies like FERMA, EFCC, commercial banks, International NGO's, Embassies and other private organizations and homes.

We hereby submit for your for your perusal our complete brochure and scope of service, be informed that we are available to meet with you at the shortest notice possible to discuss any issue that might arise from this proposal.

Sir, while looking forward to a mutually beneficial working relationship, you can be assured of our highly esteemed regards at all times.

Sincerely Yours,

**For: EMI Systems Limited/ASP**

**Victoria Minaise**  
**PR/Office Manager**  
**08036367606**

**EMI Systems Ltd.**

**Lagos** : 4A, Lawrence road, P.O.Box 52533 , Falomo,Ikoyi. **Tel.** 234-1-2673099 , **Fax** .234-1-2670137

**Abuja** : Plot 58 Lobito Crescent Wuse II, Abuja.

**Tel.** 234-9-4130625 , **Fax** .234-9-4139941

**Email** : [sales@emi-systems.com](mailto:sales@emi-systems.com) [www.emi-systems.com](http://www.emi-systems.com)

# Introduction of “EMI Systems Limited”.

We wish to introduce our Group “EMI Systems Limited”, specializing in Security, Safety systems and special projects (**Supply of special security solutions and training**).

We are an Israeli Group with a long working profile in Nigeria. EMI Systems Limited specializes in the supply of special security solutions and training. Our mandate and vision is to deliver safety and security solutions that are highly cost effective and cost efficient to the fulfilment and satisfaction of our customers

**EMI Systems** has the technological knowledge to develop all forms of security system from the Conceptual design to the commissioning and maintenance of the system all in accordance with the client's requirements. Our systems are adaptable to any location and climatic conditions.

- For office and residential security, we have the following on offer:
- **Consultancy and Design solutions:** Tailor-made to suit your needs
- **Anti- Intruder systems** (Alarm and Motion Detection Systems)
- **Bullet Proof:** Doors, Windows and Cars.
- **Special Devices:** Bug Detectors, Bugging and De-bugging services,, Hand held Metal Detectors, Walk through Metal Detectors, Percule X-Ray machines, Interlock, Access Control (numeric/digital/stand alone card reader & biometric).
- **Recording Devices:** Watches, Pens and Audio/Video Recording Pens & Watches.
- **Rapid Response in Abuja** (“Abuja Security Patrol”) Control Centre with 24Hours fully armed rapid response teams, communication to the Control Centre via radio by pressing the panic buttons.
- **MUL-T-LOCK** High Security and Safety doors.
- **Security/Safety systems** (Access Control, Computerized Digital CCTV, Video Motion Detection, Electronic Perimeter Fence, Fire Engine, Fire detection and Fighting systems etc)
- **Security and Network** solutions for Information Technology (“SecurNet Limited”) Training of personnel as bodyguard for physical protection.
- After sales and technical support available nationwide.

**Emi Systems Ltd** is synonymous with trust, integrity, security, efficiency and world class service.

Our business is focused on delivering value by protecting lives and property at home, work and while on transit.

We Supply, Install, Train and offer technical Support nationwide.

**Our Vision:** To consistently deliver unsurpassed value to our clients by protecting their most precious assets.

**Our policy:** Quality, client services and client satisfaction come first.

Our special project Department deals with solutions, equipments, and Engineering.

For more detailed information, please find attached our **company brochure**.

We will be available for further discussion at the shortest notice.

We look forward to a mutually benefiting relationship.

Yours faithfully,

**For: EMI Systems Limited/ASP**

**Victoria Minaise**

**PR/Office Manager**

**08036367606**

## **LIST OF CLIENTELES**

- ❖ The Central bank of Nigeria
- ❖ Diamond Bank
- ❖ Standard Chartered Bank
- ❖ Nikon Insurance
- ❖ Nigerian National Petroleum Corporation
- ❖ Niger Delta Development Commission
- ❖ Chevron Nigeria Limited
- ❖ PPMC
- ❖ Total Elf Petroleum Nigeria Limited
- ❖ Hyson (Nigeria) Limited
- ❖ National Emergency Relief Agency
- ❖ National Assembly Abuja
- ❖ NAPIMS
- ❖ Supreme Court
- ❖ Lagos State Government
- ❖ Ministry of the Federal Capital Territory Administration
- ❖ EFCC
- ❖ MTN Nigeria Limited
- ❖ ECONET Wireless
- ❖ ETCO
- ❖ Strabag
- ❖ Gilmor Engineering
- ❖ Setraco
- ❖ IPCO
- ❖ PATHS
- ❖ UNDP
- ❖ PW
- ❖ HPI
- ❖ Siemens
- ❖ Ericsson Communication
- ❖ British Airways
- ❖ Best Tobacco
- ❖ Tamaco Holdings
- ❖ Beton Bau Nigeria Limited
- ❖ Friedrich Ebert Stiftung
- ❖ International Committee for Red Cross
- ❖ Delaney
- ❖ Hyson
- ❖ Lufthansa
- ❖ SHELL (SPDC)
- ❖ SHELL Trustees Port-Harcourt

## **EMBASSIES INCLUDE**

- ❖ Austrian Embassy
- ❖ Australian High Commission
- ❖ Belgium Embassy
- ❖ The British High Commission
- ❖ British Council
- ❖ Canadian High Commission
- ❖ European Union
- ❖ Finland Embassy
- ❖ French Embassy
- ❖ Embassy of the Federal Republic of Germany
- ❖ Hungarian Embassy
- ❖ Irish Embassy
- ❖ Israeli Embassy
- ❖ Italian Embassy
- ❖ Kuwaiti Embassy
- ❖ Netherlands Embassy
- ❖ Portugal Embassy
- ❖ Royal Norwegian Embassy
- ❖ Slovakia Embassy
- ❖ Spanish Embassy
- ❖ Swedish Embassy
- ❖ Swiss Embassy
- ❖ The Republic of Trinidad & Tobago
- ❖ Turkish Embassy
- ❖ US Embassy
- ❖ Zambian High Commission

# SECURITY MANAGEMENT AND CONSULTING

EMI takes a management approach to security that is proactive rather than reactive. Our security plans are never generic in nature. Rather, we seek to understand the singular nature of our client's mission and the risks that threaten that mission; and then we customize a plan to mitigate those risks. As a result, the organization is free to focus on its essential purpose, regardless of the operating environment.

## TRAINING OF DRIVERS AND VIP CLOSE PROTECTION

- Training of drivers for the level of Defensive driving with basic response.
- Training of VIP Close Protection Personnel up to international level and great performance which includes; shooting from moving cars, shooting within public and more.
- Training of 2nd ring escort guards (Lead car, Back-up close guard, Escort Striking group) which includes shooting from a moving car



**Defensive Combat Training**

## **CLOSE PERSONAL SECURITY DETAIL**

EMI offers Personal Security Detail ("PSD") to provide close protective escort support to client personnel in hostile environments. The service includes a "meet and greet" upon arrival, transportation to the clients' facilities, and protective armed PSD accompaniment when required. Our teams are drawn from specialist Royalty and Diplomatic Protection and Special Forces/Elite Forces backgrounds. EMI takes great care to ensure that the correct personalities are each matched to their Principals and are always discreet and diplomatic in their presence and response.

- Executive Close Protection – Individual Escort and Teams
- Harassment & Stalking Threat Management
- Personal Protection & Safety Training – Individuals, staff, families, etc.
- Spouse & Family Safe Escort – Domestic and Overseas
- Event Security Management
- Risk Profiling Surveys and Assessments for VIPs and Key Personnel
- Security Drivers and Chauffeurs
- Threat Incident and Event Management
- Police and Government Liaison
- International Evacuation and Rescue – Individuals and groups



### What is ASP?

ASP is a division of EMI Systems Limited, the most Reliable Security Solution Company in Nigeria. The concept of ASP is to provide a final solution for individuals and corporate bodies. The system works on communication between the client and our Central Station via Radio. A VHS transmitter will be installed at the location with a Panic Button alarm system for any emergency situations.

**Mission Statement:** To consistently deliver unsurpassed value to our clients by protecting their most precious assets.

### The Package

- Armed Security Patrol visiting your locations five times within 24 hours (twice during the day and three times during the night)
- Armed Response Team, 24 hours available
- Escort services with Armed Patrol for special trips



Subscribers will have at their disposal, fast and efficient aid in the event of any emergency. All that is needed is for the subscriber to press a provided panic button, which will relay signal to our central monitoring station through our installed transmitters.

The Patrol teams will be contacted via radio communication and they will rapidly respond to the distress call.

❖ ASP offers Security News bulletin to its clients i.e. Embassies, interested subscribers should please forward their mailing address to [victoriaminaise@gmail.com](mailto:victoriaminaise@gmail.com), [emi.asp@gmail.com](mailto:emi.asp@gmail.com)

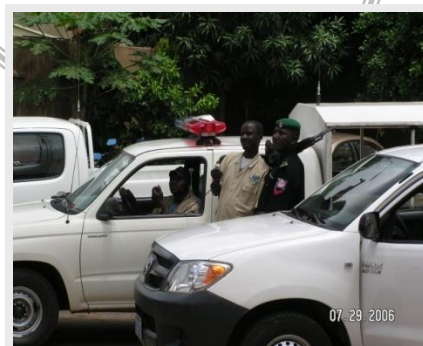
## EMI Protective Services

EMI provides basic security services and security consulting. Its services include security audits, guard force oversight and training, background checks, and “bug” detection/sweeps for business and residents.

We also provide Security Solid Planning, evaluation, care and treatment for individuals, corporations and organizations of all types.



**Control Room Solutions**



# EMI EXECUTIVE TRANSPORT SERVICE

## EXECUTIVE CAR SERVICE

EMI systems provide Executive car services drop from Town to the Airport for its distinguished clients. The car services involve various categories of Executive cars ranging from a **Land cruiser jeep, Toyota Jeep to a Hyundai, Kia or Honda civic** depending on the client's request. In respect to this, you will find below our Charges for the various categories of cars.

### Category A:

A car service drop from town to airport with a Land Cruiser Jeep

### Category B:

A car service drop from town to airport with a Toyota Jeep at

### Category C:

A car service drop from town to airport with a Honda, KIA or Hyundai car



## BULLET PROOF CAR SERVICE

EMI Systems is interested in the welfare and the security of our clients that's why we have taken it upon ourselves to provide Bullet proof car services to you. Our services involve trips from airport to town (one way) and town to airport (one way).

We have highly trained, qualified and competent drivers who will be available at anytime to serve you



•To book for such trips, a 48 hour notice would be required (if possible).

# Other Products & Services

The provision of a Security Solution does not end at the use of the Panic Button Alarm System, there are other recommended details that needs to be given full attention in and around the building, residence, office complex or facility. Illustrated below are some security details that should be considered.

## **GUARD TOUR CONTROL SYSTEM:**

This system is used to control the tours done by patrol officers, providing the security company and its client's complete information about the tours, including the time and place visited by each officer. This information can be filtered in several ways allowing different reports to be created, depending on your needs.



**The Pipe**

**The Guard Tour Control System can perform several exclusive functions, like when to start and finish the tours, indicates if the tour was done successfully and it can be integrated to work with other technologies. It is easy to use and extremely rugged; it is powered by regular batteries that can be replaced by the client. With the level of detailed information it provides, its intelligence and the physical attributes, it is the perfect solution for your electronic guard system.**



**Hardware & Accessories**

# CLOSED CIRCUIT TELEVISION (CCTV) SURVEILLANCE SYSTEMS

EMI Systems Limited specializes in CCTV surveillance systems that ranges from stand-alone cameras to fully integrated security control centers and to the emerging IP addressable camera market. Today we are faced with an explosion of new technologies that are revolutionizing the way we view and interact with CCTV systems. At EMI Systems Limited we are committed to understanding and recommending the right solution for our customers.



PTZ Dome Camera



Day & Night PTZ Camera



Infrared Camera

CCTV systems monitor a variety of areas. They're used as an aid to security, to help control and deter acts of crime, to prevent employee pilferage and to provide employee safety. In retail environments, CCTV cameras remain as one of the most effective means of providing evidence, as well as being an effective deterrent to shoplifting, vandalism, and robbery. In industrial and commercial applications, CCTV cameras are used to monitor areas that might be dangerous or inaccessible by other means.

Cameras, digital and network recorders, monitors and related equipment are researched and recommended from a vast array of high quality products. Our goal is to create an individualized and personalized system for our clients. EMI/ASP Systems Limited will provide the appropriate technology, design, installation, and technical support necessary to deliver the system you require.

**EMI RADIO TAXIS**

We operate 24hrs services with government approved Peugeot 307 cars for the FCT and its environs. We have highly trained, qualified and competent drivers who will be available at anytime to serve you.

S/N	DESCRIPTION
1	Taxi Service within Abuja (Per Hour)
2	Taxi Service within Abuja (up to 10 hrs)
3	Taxi Service from the town to the Airport
4	Taxi Service from the Airport to the Town

**\* We also offer taxi services to neighboring states out of Abuja**



**ARMED ESCORT SERVICE**

EMI/ASP has the licensed to operate with the Nigerian Police Force. With the aid of Armed Security Operatives we offer Armed Escort Services.

Please find below a list of Armed Escort Services we offer:

- ❖ Escort Services to the Airport
- ❖ Escort Services from the Airport
- ❖ Escort Services Travelling outside Abuja



# ANTI TERROR AND BALLISTIC CARS

EMI Systems has access to making customised bullet-proof cars and vans according to specifications, bullion vans for the movement of very important documents, as cash and as a guard against armed robbery.

EMI System realizes that people are vulnerable to attacks even when they are in their cars. The attackers also realize this. It is for this reason that we put the utmost care into every bullet proof car and bullet proof vehicle we customize.

## Toyota Land Cruiser 100 Middle East, protection level VR6, LHD6 Cylinders, petrol version



Interior Toyota Land Cruiser 100 Middle East



Using the latest space age material available, this vehicles are completely disassembled, install armor components, beef up suspension and reassemble the vehicle so that it looks and handles like it did before armoring.

### **SPECIFICATION FOR VEHICLES ON STOCK!** **PROTECTION LEVEL VR6, according to guidelines BRV 1999**

<b>Rifles</b>	<b>Projectile Mass</b>	<b>Test distance</b>	<b>Velocity</b>	<b>Energy</b>
Calibre: 7,62 x 51 FJ/PB/SC	9,5 g +/- 0,1 g	10 m +/- 0,5 m	830 m/s +/- 10 m/s	3300 J
Calibre: 5,56 x 45 FJ/PB/SCP	14,0 g +/- 0,1 g	10 m +/- 0,5 m	950 m/s +/- 10m/s	1800 J
Calibre: 7,62 x 39 FJ/CB/SC	7,95 g +/- 0,1 g	10 m +/- 0,5 m	710 m/s +/- 10m/s	2090 J
Calibre: .44 Magnum	15,6 g +/- 0,1 g	5 m +/- 0,5 m	490 m/s +/- 10m/s	1510 J



New, reinforced door hinges



Cargo Compartment



Overlapping in-doors





## ARMORING

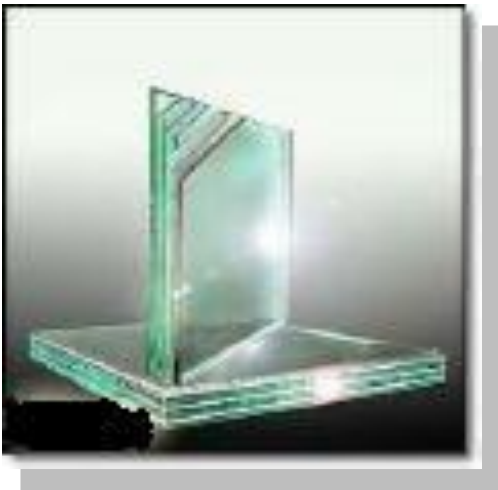
The armoring system is integrated after the production process of the base vehicle without changing its exterior appearance. The safety cell is designed in such way, that all gaps between the main body of the car and the doors are overlapped to prevent projectiles or splinters from entering the passenger compartment. The method of installation also offers highest possible protection to the vehicle occupants against the effects of a bomb blast from either side of the vehicle.

- Use of ballistic steel for increased safety for doors, bulkhead, sidewalls and rear cargo doors for protection against impact angles 45/90°
- Protection against 2 hand grenades DM 51 for the roof with ballistic steel
  - Use of new stronger springs and shock absorbers to increase the driving comfort
- Use of 39 mm PC clear glass in windshield, doors and barn doors
- Glass in cargo compartment remains standard glass, painted black with ballistic steel behind
- Both fuel tanks are ballistically protected against the effects of projectiles
- All gaps and holes are armored in an overlapping condition



# BALLISTIC RESISTANCE GLASS

**EMI SYSTEMS LIMITED** specialize in bullet-resistant glasses for government, military, institutional and commercial clients. We custom-develop systems for a variety of ballistic, forced-entry and impact-resistant applications, including [automobiles](#) and [architect applications](#).



**A bullet proof glass being shot at**

## **Security Glasses for Buildings**

Our security glasses can be found in all sorts of [architectural structures](#): court houses, government buildings, jails, prisons, hospitals, and retail outlets among others. They offer protection against forced entry and ballistic threat. They can be made as tinted, wired and as one-way mirror.



**Bank teller window fully bullet proofed**

## **Decorative Glasses for Homes and Offices**

We can custom-fit glass and mirrors to compliment all your [decorative needs](#). We offer complete line of beveling, edging and drilling services with highest tolerances and precise fitting.

# MUL-T-LOCK High Security and Safety doors

## Decorative Doors - Sun Door

This door is a complete system for commercial, residential, institutional entrances and interior doors.

The SUN-DOOR is a rigid panel combining two steel panels, a wooden frame and polyurethane foam injected hard core.



**IDS Doors**

## Mul-T-LOCK Ballistic Resistant H.S Steel Door

The ballistic resistant door is a complete protective system for the entrance of heavily secured areas. The construction is of reinforced steel with a high security 4-way lock, ballistic resistant elements (bullet resistant window is optional) and various accessories.



## Mul-T-LOCK High Security Door

One of the best and most largely sold security doors of its kind in the world that incorporates the most modern developments and improvements for residential and commercial entrances. The construction is of reinforced steel with a high security 4-way lock and various accessories.



## Super Door

The advanced super door includes the latest improvements, which makes it one of the best protection systems for residential and commercial entrances.

The construction is of reinforced steel with a high security 4-way lock and various accessories.



## Fire Door Model 708 & 408

The fire door model 708 and 408 is a decorative fire resistant steel door. Model 708 is available with fire resistant window in 4 optional designs. Door model 708 is rated as 2-hour fire door and door model 408 is rated as 1 hour fire door. Available with or without locking mechanism, may be combined with a variety of panic exit devices.



## Designed High Security Door 795

The designed high security door is a complete system for residential and commercial entrances providing high security together with a highly decorative finish. The door is manufactured and equipped with specially designed hardware, vinyl layer and construction frame. The construction is of reinforced steel with a high security 4-way lock and various accessories.



# MUL-T-LOCK PADLOCKS

## G – SERIES PADLOCK



Padlock		A	B	C	D	E	F
		G-47T	mm 47	74	20	8	22.5
	Inch	1.850	2.913	0.787	0.314	0.885	0.826
G-55P	mm	55	77	20	10	23	22
	Inch	2.165	3.031	0.787	0.393	0.905	0.866



Padlock		A	B	C	D	E	F
		G-47	mm 47	51	25	8	26.5
	Inch	1.850	2.007	0.984	0.314	1.043	0.826
G-55	mm	55	54	29	10	27	22
	Inch	2.165	2.125	1.141	0.393	1.062	0.866

The G-series Padlocks from Mul-T-Lock are a medium security solution that offers great value for money. This padlock is anti-corrosive in all weather conditions and its hardened boron alloy shackle make it tamper resistant. This, with the incorporate Mul-T-Lock High Security cylinder make it a good choice for many industrial and commercial applications.

## C – SERIES PADLOCK & ACCESSORIES



Model	Shackle				Body							Standard Grades	Suitable Hasps
	A	B	C	D	E				F				
	E	E1	E2	E3	"CEN"								
C-6	mm	47	50	22	6	—	22	50	102	34	—	—	
	Inch	1.850	1.968	0.865	0.236	—	0.866	1.968	4.015	0.944	—	—	
C-6	mm	47	50	22	7.9	—	22	50	102	22	2	—	
	Inch	1.850	1.968	0.865	0.311	—	0.866	1.968	4.015	0.866	—	—	
C-10	mm	47	63	22	9.5	—	30	63	102	33	3	16	
	Inch	1.850	2.480	0.866	0.374	—	1.181	2.483	4.015	1.299	—	—	
C-13	mm	51	73	25	12.7	25	37	52	132	33	4	13	
	Inch	2.007	2.874	0.984	0.5	0.984	1.456	2.083	4.815	1.299	—	—	
C-15	mm	53	82	32	15.6	—	50	63	182	38	5	16	
	Inch	2.096	3.222	1.259	0.622	—	1.968	2.489	4.015	1.496	—	—	

Mul-T-Lock's C-series Padlocks & accessories have extra strength and patented engineering concepts that make this a solution for those looking for a High Security Padlock. With a hardened steel shell and a hardened boron steel shackle C-Series Padlocks are stronger than the standard steel padlocks in the market.



Hasps No.		A	B	C
		10	mm 80	95
	Inch	3.149	3.740	1.574
13	mm	90	109	40
	Inch	3.543	4.291	1.574
16	mm	110	116	48
	Inch	4.330	4.566	1.889

## E – SERIES PADLOCK



Model	Body	Shackle						Standard Grades*	Suitable Padbar	
		A	B	C	D	E	F			
		"CEN" "ASTM"								
E8-H	mm	84	52	33	8	15	16	4	6	PB-8
	Inch	3.228	2.047	1.229	0.314	0.551	0.629			
E11-H	mm	95	62	34	11	16	17	5	6	PB-11
	Inch	3.700	2.440	1.338	0.433	0.629	0.669			
E14-H	mm	107	72	34	14	19	21	6	6	PB-14
	Inch	4.094	2.834	1.338	0.551	0.749	0.826			
E18-H	mm	122	84	40	18	24	25	6+	6	PB-14
	Inch	4.806	3.307	1.574	0.709	0.944	0.984			

The E-series Padlocks are Mul-T-Lock's Extra-Security group level. The E-Series is the padlock for those looking for the highest level of security.



Model	Body	Shackle							Standard Grades*	Suitable Padbar		
		A	B	C	D	E					F	
		"CEN" "ASTM"										
E8-L	mm	82	32	33	8	14	50	102	29	4	3	PB-8
	Inch	3.228	2.047	1.229	0.314	0.551	1.968	4.015	1.023			
E11-L	mm	94	62	34	11	16	58	102	29	4	4	PB-11
	Inch	3.706	2.440	1.338	0.433	0.629	2.263	4.015	1.141			
E14-L	mm	104	72	34	14	19	63	102	32	6	5	PB-14
	Inch	4.094	2.834	1.338	0.551	0.749	2.480	4.015	1.259			

# MUL-T-LOCK SAFE

The Mul-T-Lock range of highly intelligent and user friendly safes were designed for maximum reliability and provide a solution to anyone wishing to protect their property and privacy. All electronic safes include a motorized locking mechanism, powered by four AA 1.5v alkaline batteries. The user can choose to operate the safe either with a credit card or with a personal code. The DC model provides a reliable, convenient and easy to use solution for hotel guest rooms.



## SAFE SPECIFICATION

Dimensions & Features		Series "505"	Series "405"	Series "205"	Series "105"	Wall Safe WD1	
<b>Outside Dimensions</b>	Height	cm	60	55	27.5	25	23
		Inch	23 5/8"	21 5/8"	10 7/8"	9 1/16"	9 1/16"
	Width	cm	40	38	42	38	35
		Inch	15 3/4"	15"	16 1/4"	15"	14 5/16"
Depth	cm	50	36	35	25	15	
	Inch	19 5/8"	14 1/8"	13 3/4"	6 3/4"	6 3/4"	
<b>Thickness</b>	Door	cm	8mm	8mm	6mm	6mm	8mm
		Inch	5/16"	5/16"	1/4"	1/4"	5/16"
	Walls	cm	3mm	3mm	2mm	2mm	2mm
		gauge	12 gauge	12 gauge	14 gauge	14 gauge	14 gauge
<b>Volume</b>	Liters		93lt	54lt	24lt	15lt	9lt
	Cubic feet		3.5cu ft	1.9cu ft	0.9cu ft	0.55cu ft	0.35cu ft
<b>Weight</b>	kg		51kg	39kg	18kg	14kg	13kg
	lbs		112lbs	86lbs	40lbs	30lbs	28lbs
<b>Bolts</b>	mm		5 ø25mm	3 ø25mm	2 ø20mm	2 ø20mm	2 ø20mm
	Inch		5 ø1"	3 ø1"	2 ø3/4"	2 ø3/4"	2 ø3/4"
<b>Shelves</b>			1	1	1	Optional	Optional
<b>Carpet</b>			Yes	Yes	Yes	Yes	Optional
<b>Colour</b>	Standard off-white, other colours available upon request						
<b>Suitable for</b>			Yes	Yes	Yes	Optional	No

# Intruder/Burglar Alarm System

The Intruder/Burglary Alarm System is a 24 hour Monitoring Service for total peace of mind it is both the commercial and domestic applications can be linked to a central monitoring station that will immediately notify a local police station should an alarm be activated. The alarm will activate even if an intruder cuts the phone line - something that intruders often think will disable the alarm system. The Intruder Alarm Systems we install are high quality systems that provide house owners and Office Complex with the security they require, at a price they can afford.



**Intruder/Burglar Alarm Control Panel**



**Panic buttons** or personal attack buttons are used to activate the alarm when you feel you may be under threat. Panic buttons will activate the alarm even if your system is not armed. The remote Keypad of your alarm system incorporates a built in panic button as standard. Panic buttons would be used in places vulnerable to robberies e.g. filling stations, shops, banks, etc. Panic buttons can be "set up" for silent alert to the monitoring station, i.e. no audible alarms will sound when pressed.

**A Passive Infrared Detector (PIR)** operates by detecting heat movement given off by a person's body. Passive Infrared's are almost exclusively used in commercial alarm systems due to reliable detection with a very low risk of false alarms. These detectors would be used in shops, banks, factories and high-risk areas etc.



**These devices are Heavy Duty Metal Contacts** activate your alarm when a roller shutter or loading door is opened. These contacts are very robust and can with stand forklift trucks or heavy goods vehicles driving over them, and are designed for use in commercial alarm systems.



**Inertia Shock Sensors** are normally fitted to windows and doors, they work by sensing shock or vibration by a potential intruder trying to force open or break a window or door.

# Access Control and Identification Card System

## WHAT IS ACCESS CONTROL SYSTEM?

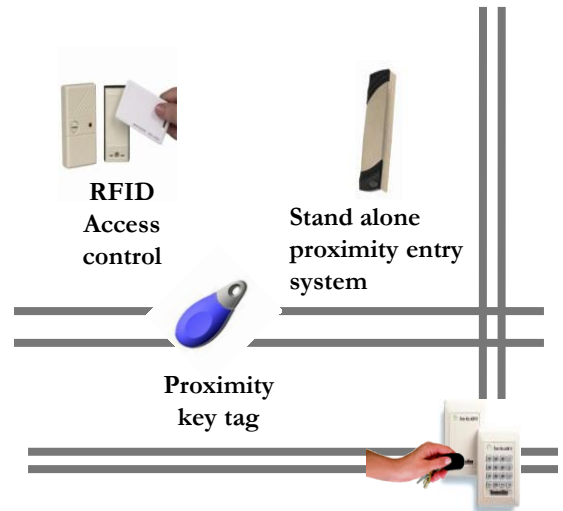
Access control System is operated in proximity to secured area control point including an operating system therein to provide multiple operating modes. The Access Control is operable to provide access to a secured area by entry of an identification code or the use of proximity card, which is read by the card reader, or entered to the keyboard. The user will be granted access to the controlled area when the user access requested corresponds to the level of access provided by the identification presented.

This is an innovative electronic security lock that combines secure entry with ease of use. The system can be used in remote locations to provided unattended access security as well as whole-of-building access control in an office, factory or warehouse environment.

## Stand Alone Access Control

These are really keypad systems that are hardwired in. The keypad is mounted outside the door, and it controls an [electric strike](#) or [magnetic lock](#). The Stand Alone Access Control can be accessed by the use of proximity card that is programmed to be identified by the reader.

The Access Control can also be restricted to certain individuals by programming the reader to recognize only the specified codes on the proximity cards of this individuals.



## Online Access Control Systems

The Online Access Control combines hardware and software with the latest advances in digital video technology to provide customers with superb stand alone and integrated access + CCTV solutions.

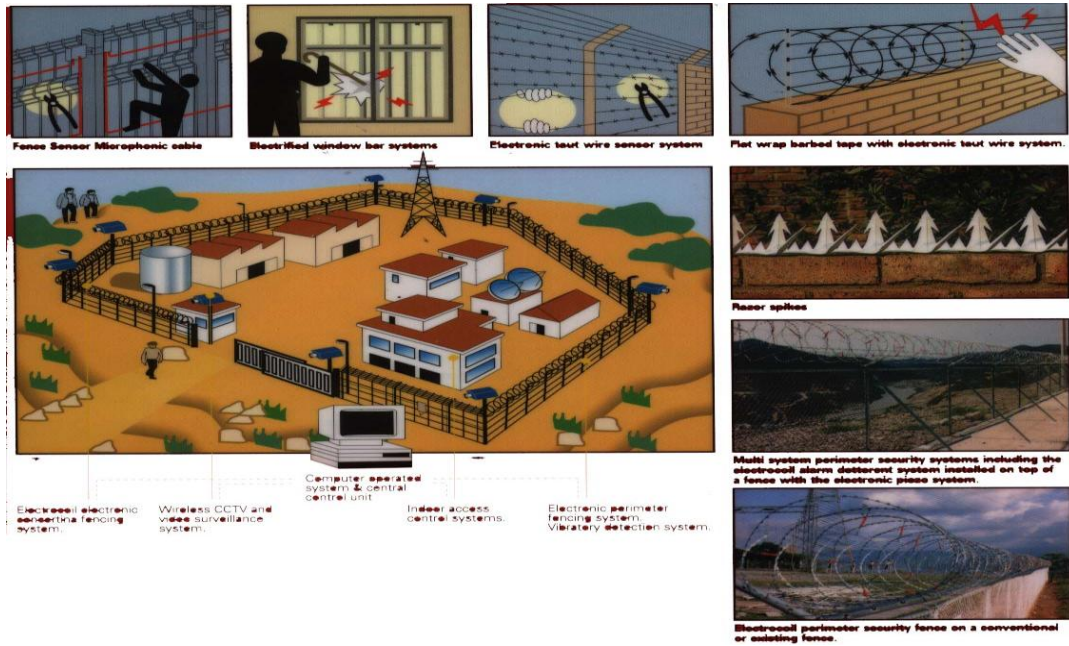
When integrated with *Doors*, after initially configuring cameras to coincide with doors, gates, or other input points on the access control system, subsequent doors reports will communicate with the Server application to find and list any access system events and play them back in a viewer window on demand. The Online Access Control application records and retrieves all video events, as well as providing on-screen camera control and live monitoring, in a powerful, easy-to-use interface.



# PERIMETER INTRUSION CONTROL SOLUTIONS

Irrespective of the sophistication of your internal security system, your perimeter protection and detection remains the first line of defence . By including perimeter protection and detection measures in a security system you are conforming to a layered defence approach, as recommended by many security experts.

EMI/ASP offers Perimeter Protection systems for commercial, public sector, government and high security sites. AC Controls has provided advanced perimeter protection and detection systems for clients such as CBN, SHELL, etc.

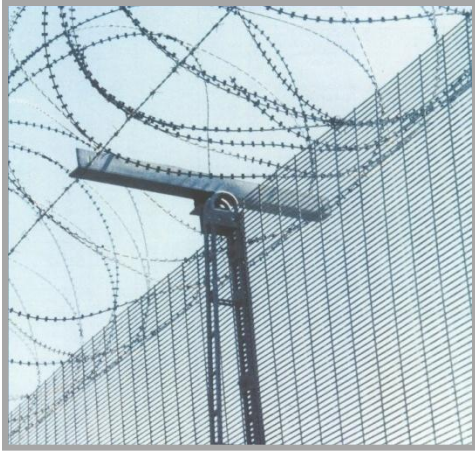


An electric fence system consists of electric wires carrying high voltage electric pulses that provide a non-lethal shock to an intruder. Tampering with the fence results in an alarm activation, this is transmitted to security personnel monitoring the site. The fences come in a wide range of configuration and can be installed as a stand-alone barrier or as an existing perimeter protection.

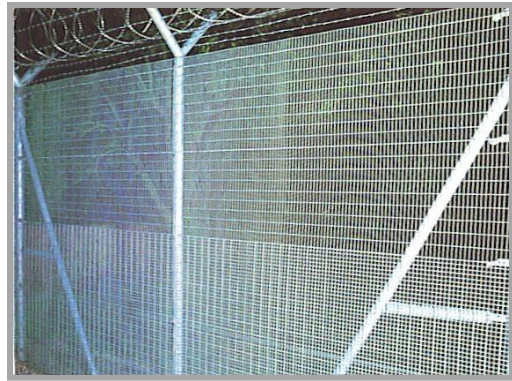


# HIGH SECURITY FENCING

Designed to meet today's increased security risk, we offer a modular, flexible approach to addressing the issues of vandalism, theft, civil disorder and indeed terrorism. This high level of perimeter security delays if not totally prohibits attempts to cut through, climb over or tunnel under the fence. The welded mesh fabric as shown gives great strength and reduces hand and foot hold, and yet still allows excellent visual imaging from even the acutest of angles.



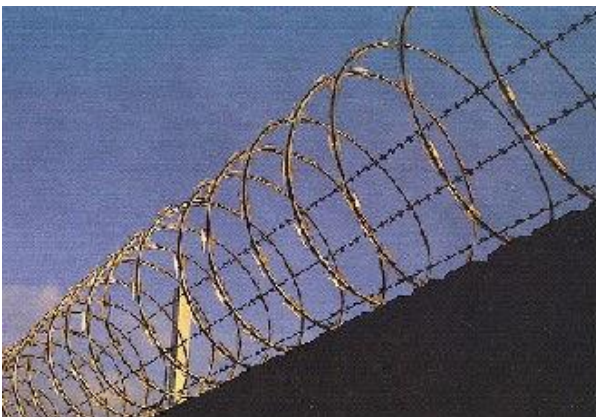
Manufactured from 'bi-steel' hard drawn carbon steel. Welded into a strong lattice formation. Galvanized to ISO EN 1461 and/or plastic coated.



## BARBED TAPE.

If you're looking to protect people, property or goods from any sort of threat, your security planning and installation should include Barbed Tape Systems. And, if you are simply seeking to improve your current security, existing protection can be rapidly and cost-effectively upgraded by EMI.

A modern, cost-effective alternative to barbed wire, barbed tape presents cutting surfaces throughout – preventing hand holds at any point. It is an effective solution to high security needs concerning, and our consulting services can ensure you get the most suitable security design.



# WALK THROUGH/ HAND HELD METAL DETECTORS AND LUGGAGE / BAG SCANNER



**Hand held Metal detector**

- In countless places all over the country, including courtrooms, warehouses, jails, airports, schools, embassies, correctional facilities, hospitals, nuclear power plants, venues for special events and more—security operations rely on the use of hand held metal detectors.



**Walk through metal detector**

- For airport security hand held metal detectors are essential for continued safety in our travels. As well as in schools and government buildings etc, hand held metal detectors are often an important part of security procedures.
- Although primarily used for security, hand held metal detectors can also be used for recreation. Searching for hidden items at home, at the beach or in even in the park.



**Luggage / Bag Scanner**

# SAFETY & FIRE FIGHTING EQUIPMENT

**EMI** Systems through our associates in Israel, installs fire-fighting equipment in offices, residential complexes, Industrial facilities and Depots.

Our fire fighting vans are equipped with the state of the art technology and their responsiveness to any unforeseen circumstances is immediate and very effective.



## SAFETY:

Our safety activities majorly covers fire prevention and fighting systems and equipment.

We offer you the best possible protection against fire outbreaks as briefly outlined below. We have fire detection systems including panels, state of the art detectors, sprinklers, fire extinguishers, fire trucks etc.

## Fire Alarm Systems

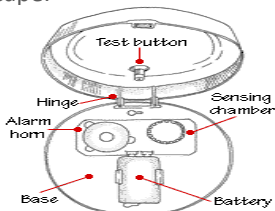
A Properly working **Smoke & Heat Detector** in a home or office doubles the odds of surviving a fire outbreak. **Smoke & Heat Detectors** stands guard around the clock and when it first senses smoke, it sounds a shrill alarm. Because most fatal fires happens when people are not expecting, these detectors often buys them the precious time it takes to escape.



Smoke detector



Heat detectors



Fire Alarm Systems



Fire Extinguishers

# SKYLIGHTS

Polycarbonate Structured skylight sheets are designed for warm climates, Polyshade Polycarbonate structural glazing sheets effectively reflect sunlight and prevent excess heat buildup. A distinctive co-extruded reflective coating gives polyshade an efficient shading capacity and a special advantage over other pigmented sheets. Polyshade sheets feature an attractive metallic appearance, coupled with resistance to UV damage, extra strength, durability and ease in installation.



- ❖ Easy to work with and install using ordinary tools
- ❖ Transparent
- ❖ Energy Efficient
- ❖ Available in 5 different colours
- ❖ Rigid, yet flexible
- ❖ Flame Resistant
- ❖ Impact Resistant Virtually Unbreakable
- ❖ Ultra light Weight

# POINTER ONLINE FLEET MANAGEMENT SYSTEM

Pointer Systems Nig. Ltd is the only organization that offers an Online Fleet Management System that works on GPRS DATA and not SMS.



The Pointer online web application is an efficient and friendly tool for tracking, real time monitoring and reporting for the new and the advanced fleet manager in the information world of today.

The Online Fleet Application enables maximum utilization of the system at minimum cost as well as maximum utilization of system resources which includes saving the fleet manager's precious time.

Pointer Systems Nig. Limited & Starcom Systems supporting [Turn Key Solution](#) which allows the local operator to reap results quickly with minimum risk:

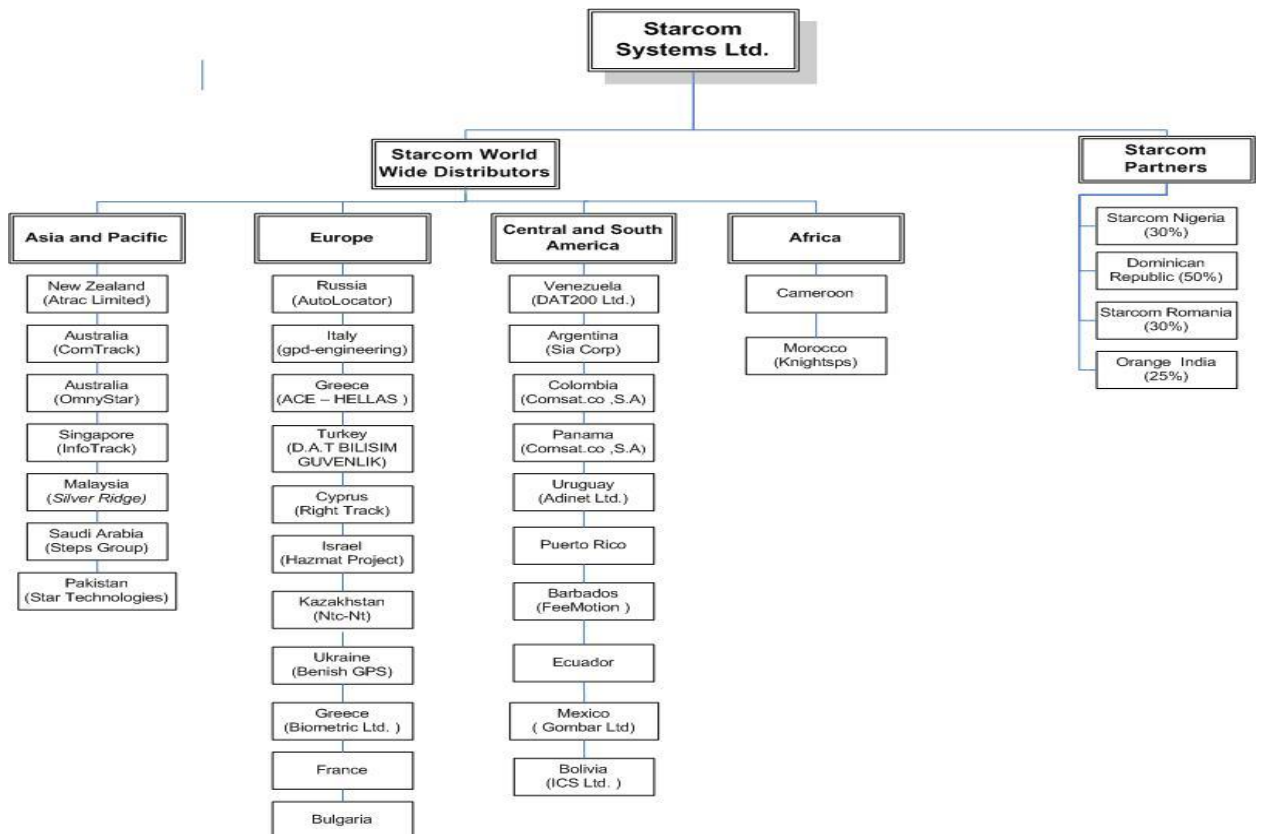
- We supply technical and operational staff **Training**
- We supply full **technical support**
- We consult and help to create the **installation network**
- We consult and help to create the **enforcement team** and the connections with the local police/security forces

**Pointer Systems Limited** is a subsidiary of **EMI Systems Limited** in Collaboration with **Starcom Systems Limited**.

**About Starcom Systems Limited:**

- Starcom Systems Ltd. **Develops, Design and Manufacture** wireless & wired solution for **GSM and CDMA** networks
- Starcom is an international company which have **10 Years** of experience in the telematics market
- Starcom keeps on going **Research and Development** for hardware and software as well as a fact that it hold **ownership for the technology**
- Starcom **A-team** coordinates electronic engineers and software programmers side by side with experienced staff which established more then 25 centers and operations world wide.
- Starcom’s Mission is to **Continually Improve** the technology and to provide top solutions with a **Marketable Price**

**Starcom World Wide Operations ...**



# ONLINE FLEET MANAGEMENT APPLICATION

The Fleet Management online web application is an efficient and friendly tool for **tracking, real time monitoring** and **reporting** for the new and the advanced fleet manager in the information world of today.

**EMI/Starcom** Online saves the fleet manager's time by offering:

- Simple and user-friendly interface that includes many built-in fleet applications.
- Real time alerts on deviation of vehicle/driver from the predefined work schedule, which can even be sent directly to the fleet manager's cellular phone.
- Unlimited options for production of activity reports in a large variety of sections.

The online web application allows the client to control and support the Starcom hardware, in an easy and friendly function which includes:

- Geo Fencing function,
- Route Control,
- Speed alerts,
- Analog and digital Inputs Control,
- Mileage Reading (via the GPS),
- Driver identification, Commands via the client personal mobile phone, wide range of Reports, and more.

The System works with a modem called the **LCU500**. This is a complete vehicle security and fleet management solution in one unit. It is the most feature-rich unit in the market today, with over 80 features. The unit and its components when installed are hidden and undetectable.



**LCU 500**

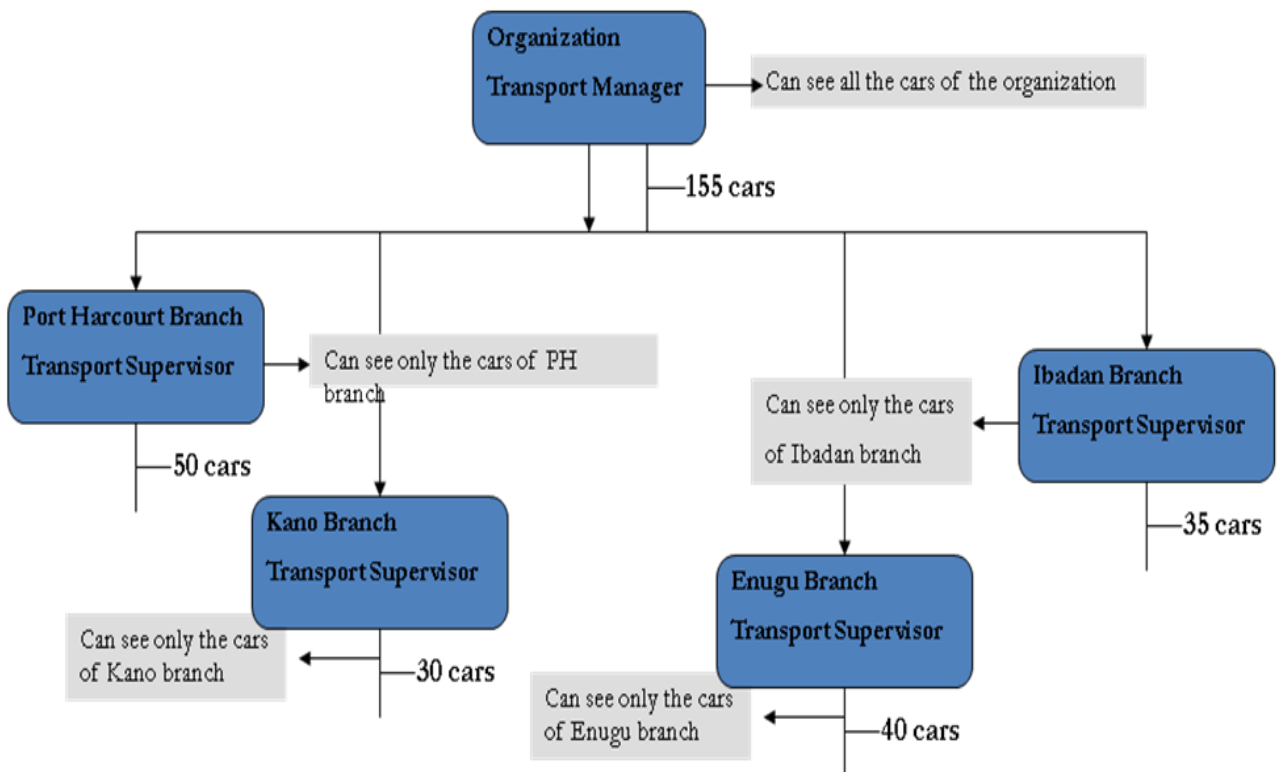
The two ways communication modem, based on existing wireless infrastructure, makes it possible to deploy the system with immediate functionality all around the world. The unit has a built-in alarm system, that monitors the vehicle at all times, and alerts the Control Center in case of theft or distress.

The **LCU500** was tested and received approvals from the leading labs around the world, including: **eMark (E24 10R-020086), TUV-GS, FCC Part 15, UL 60950, CB Certification, CE certification** and **Vibration and Shock Tests (done in a military lab).**

# BENEFITS OF FLEET MANAGEMENT

Monitoring of the entire fleet of an organization from the Head Office via web based online Fleet Management Application made easy through the **Master Key System**.

• **MASTER KEY SYSTEM:** This system enables the Transport Manager of an Organization to Monitor and Manage all the vehicles that belongs to the organization. Other branch of the organization can monitor the vehicles in their region, but only the head office can monitor the vehicle in its own region and the other regions. Diagram below



## **OTHER BENEFITS:**

- Online Fleet Management System that works on GPRS DATA and not SMS.
- With GPRS you can track the vehicle with a very high frequency of transmissions only when the vehicle is on the IP network (GPRS), to reduce SMS costs.
- External GPRS receiver connected to the unit, allowing real-time tracking and onboard location-based analysis.
- GPRS indications sent to the center includes the time of the last valid location, and current operating mode of the GPS.
- The System has the ability to send a report each time the vehicle covers a particular mileage to inform the fleet manager that the vehicle is due for maintenance. (This application is most applicable to the leasing company)**
- **Miles by GPRS:** Advanced algorithm to calculate the vehicle's mileage based on the GPS, without any external connections to the vehicle's odometer..
- **Last Location Saving:** Saving of the vehicle's last position, in case of going out of GPS coverage.
- In the situation that the vehicle is out of coverage area, the LCU 500 unit has the ability to memorize 150 reports, which is being transmitted (first in first out ) immediately it enters into coverage area.
- Time consumption, Car abuse and Petrol theft, maintenance performance and others.
- A Real time **Tracking On-Line** up to one minute interval
- An Ability to build the vehicles **Work Plan** includes; the vehicle daily route schedule, execution of an abnormal operation and more.
- Real Time transmissions to the fleet managers **Mobile Phone**, of alerts on deviation of vehicle/driver from the defined work schedule
- A Full **Geo-Fencing** tool: detect automatically when the driver entered or move out from specific area as well as when the driver didn't arrive and/or didn't leave a waypoint.
- Mileage reading** by the GPS: up to 97% accurate!

Yours faithfully,

**For: EMI/Pointer Systems Limited**

**Victoria Minaise**  
**PR/Office Manager**  
**GSM: 08036367606**